

August, 2024

Kawasaki Sponsors AREMA 2024 Conference & Expo

Kawasaki is a proud sponsor of AREMA 2024 Conference & Expo in Louisville, Kentucky. Exhibit Hours are as follows:

- Monday, September 16 : 12:30 p.m. - 5:30 p.m.
- Tuesday, September 17 : 10:00 a.m. - 5:30 p.m.

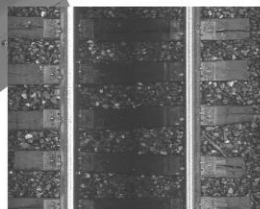
Kawasaki will be exhibiting at booth 1340. Stop by to learn more about our innovative products and services:

- Locomotive Mounted Autonomous Track Geometry Monitoring System
- Locomotive Mounted Autonomous Track Component Monitoring System
- Kawasaki Track Maintenance Platform

For more information, <https://conference.arema.org/> and <https://www.kawasaki-track.com/>.

Geometry Monitoring

Kawasaki has supplied track monitoring devices in Japan for over 25 years. After a three-year test with a U.S. Class 1 railroad, the Locomotive Mounted Autonomous Track Geometry Monitoring System (LATGMS) offers an advanced track maintenance planner. Mounted securely on a locomotive, it provides critical data more frequently, faster, and more precisely, aiding both maintenance planners and field repair crews. LATGMS data can be transmitted nearly real time to customer databases or to a proprietary software suite offered by Kawasaki Track Technologies.



Component Monitoring

Kawasaki successfully completed field testing of a locomotive mounted autonomous fastener monitoring system in Japan and North America in 2023. The System utilizes AI/ML recognition, and high resolution cameras to identify potential track fasteners that need to be inspected and repaired. Production units are now available for installation! Kawasaki is expanding this system to include other track component monitoring including, ties, ballast, joint bars and more.

Booth 1340